



Brochure A

**Square Edge Encaustic
and Geometric Floor Tiles.**

For the restoration of old ceramic tile floors.

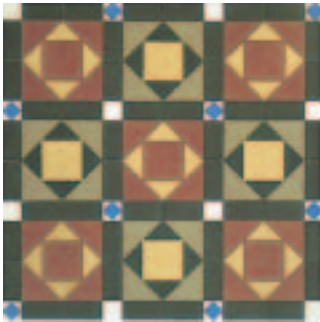
**These are made the same way as most 19th
century floor tiles.**

**Guidance Notes: Technical properties and
specifications. Please ask us for details.**





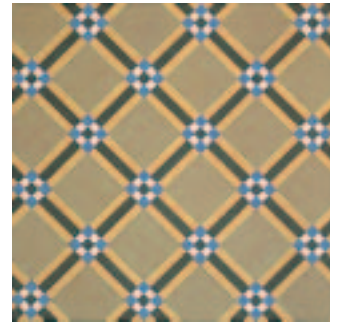
GEOMETRIC FLOOR TILES – STANDARD RANGE



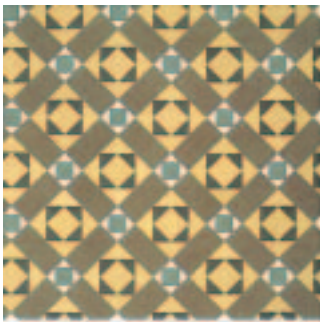
MONMOUTH



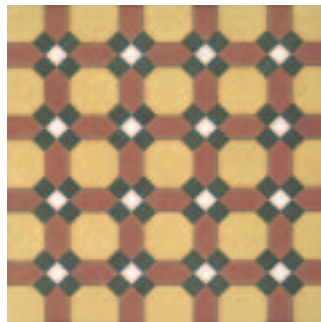
EXETER



SHAFTESBURY



CHESTER



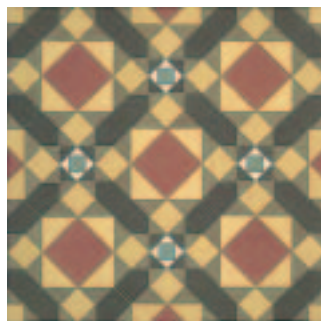
DOVER



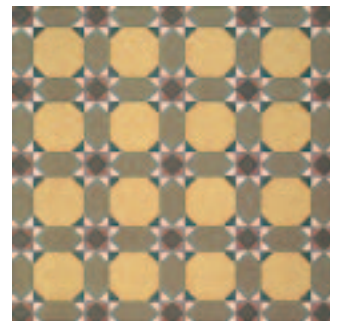
STIRLING



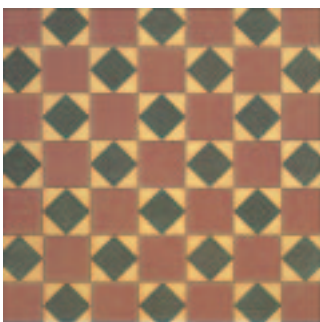
HELMSLEY



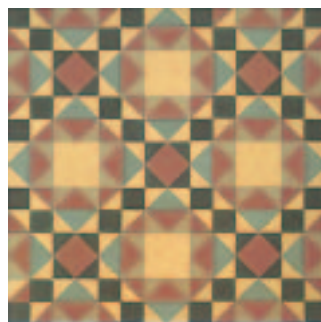
BRISTOL



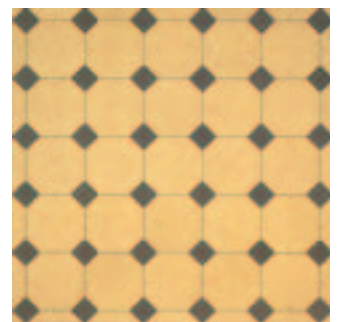
BERKELEY



CANTERBURY

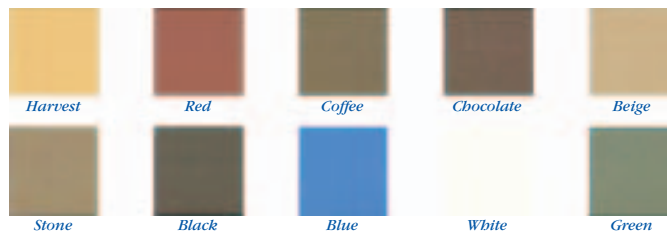


BATH



MARLBOROUGH

plain colours





GEOMETRIC FLOOR TILES



A series of installations where geometric floor tiles, alone, have been used to enhance both modern and period surroundings.



borders



WESSEX



BEAULIEU



LOXLEY



VILLIERS



MEVILLE



FIFE



ENCAUSTIC FLOOR TILES



The Encaustic process still involves a great deal of work by hand. Once the clay has been moulded, each indentation is filled with coloured, liquid clay.



Further colours are added to build up the pattern, when colours are adjacent each is allowed to dry before the next is added to ensure a clean outline.



The tile is then 'scraped back' to an exact thickness then fired for 24 hours before being cut to a precise size.





HAND MADE ENCAUSTIC TILES – STANDARD RANGE



ROXBURGHE corner
152 x 152mm



PAISLEY
152 x 76mm



PAISLEY corner
76 x 76mm



STAFFORD
76 x 76mm



CLARENCE
152 x 76mm



CLARENCE corner
76 x 76mm



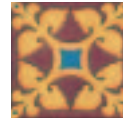
WESLEY
76 x 76mm



CARDIGAN
76 x 76mm



GROSVENOR
108 x 108mm



BURFORD
108 x 108mm



NORMANDY and corner
152 x 25 mm 25 x 25mm



SEYMOUR and return
152 x 25 mm 25 x 25mm



ROXBURGHE
152 x 152mm



MOWBRAY
152 x 152mm



*WESTMINSTER corner **
152 x 152mm



CAVENDISH
152 x 152mm



RUTLAND
152 x 152mm



MONTAGUE
50 x 50mm



LEINSTER
50 x 50mm



CUMBERLAND
50 x 50mm



ARUNDEL
50 x 50mm



ARGYLE
152 x 152mm



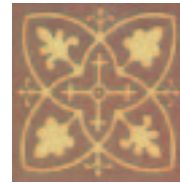
WINDSOR †
152 x 152mm



WINDSOR corner †
152 x 152mm



SUTHERLAND
152 x 152mm



BLANDFORD
152 x 152mm



CONNAUGHT
152 x 152mm



BUCKINGHAM return
152 x 152mm



BUCKINGHAM corner
152 x 152mm



BUCKINGHAM
152 x 152mm



HAMILTON corner
152 x 152mm



HAMILTON
152 x 152mm



ATHOLL
152 x 152mm



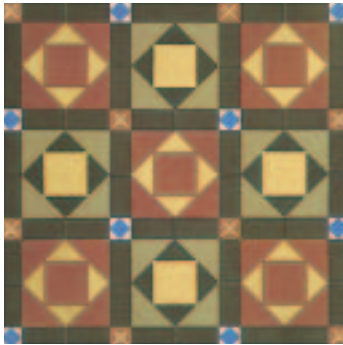
† WINDSOR nine-tile panel with Argyle centre tile
Overall size 456mm



* WESTMINSTER four-tile panel
Overall size 304 x 304mm



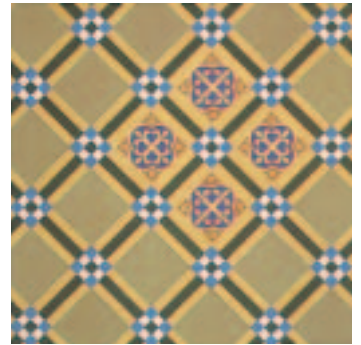
GEOMETRIC & ENCAUSTIC TILES



MONMOUTH with CARDIGAN Encaustic



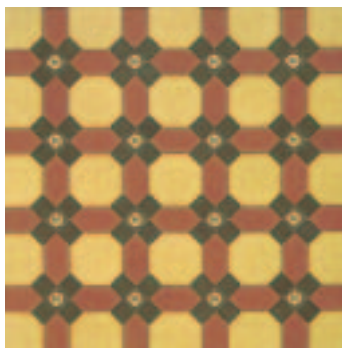
EXETER with MONTAGUE Encaustic



SHAFTESBURY with MOWBRAY Encaustic



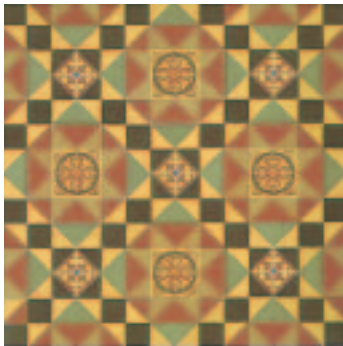
CHESTER with GROSVENOR Encaustic



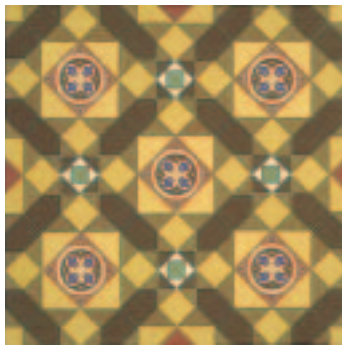
DOVER with CUMBERLAND Encaustic



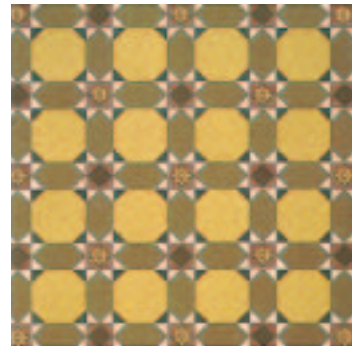
STIRLING with ARGYLE Encaustic



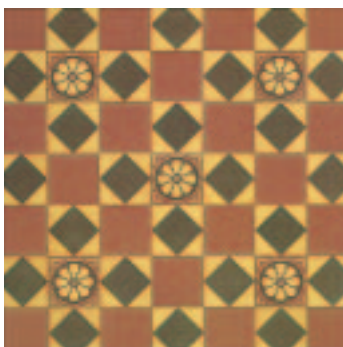
BATH with RUTLAND & BURFORD Encaustics



BRISTOL with CAVENDISH Encaustic

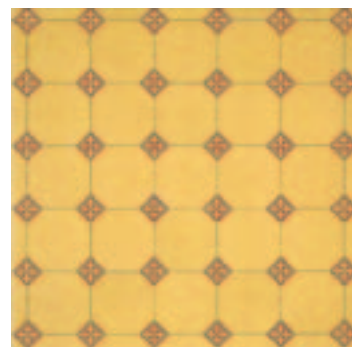


BERKELEY with ARUNDEL Encaustic



CANTERBURY with ATHOLL Encaustic

The designs shown here are just a few of the many and varied decorative schemes it is possible to create using geometric and encaustic floor tiles together.



MARLBOROUGH with LEINSTER Encaustic